

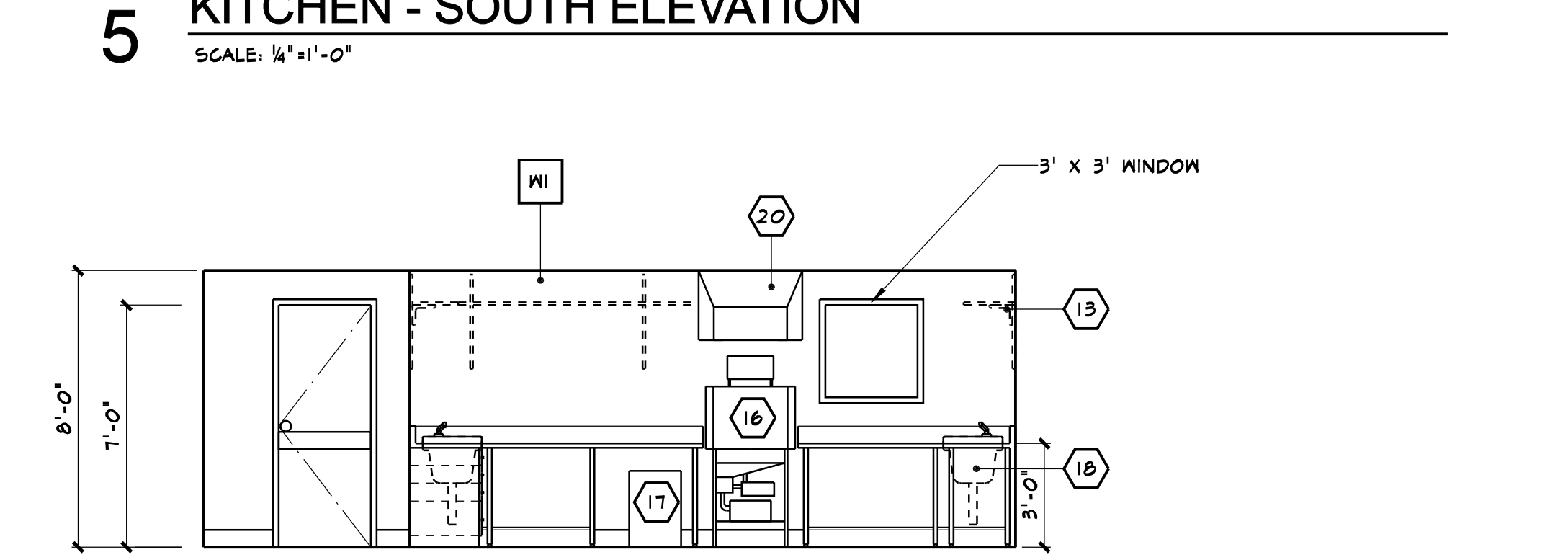
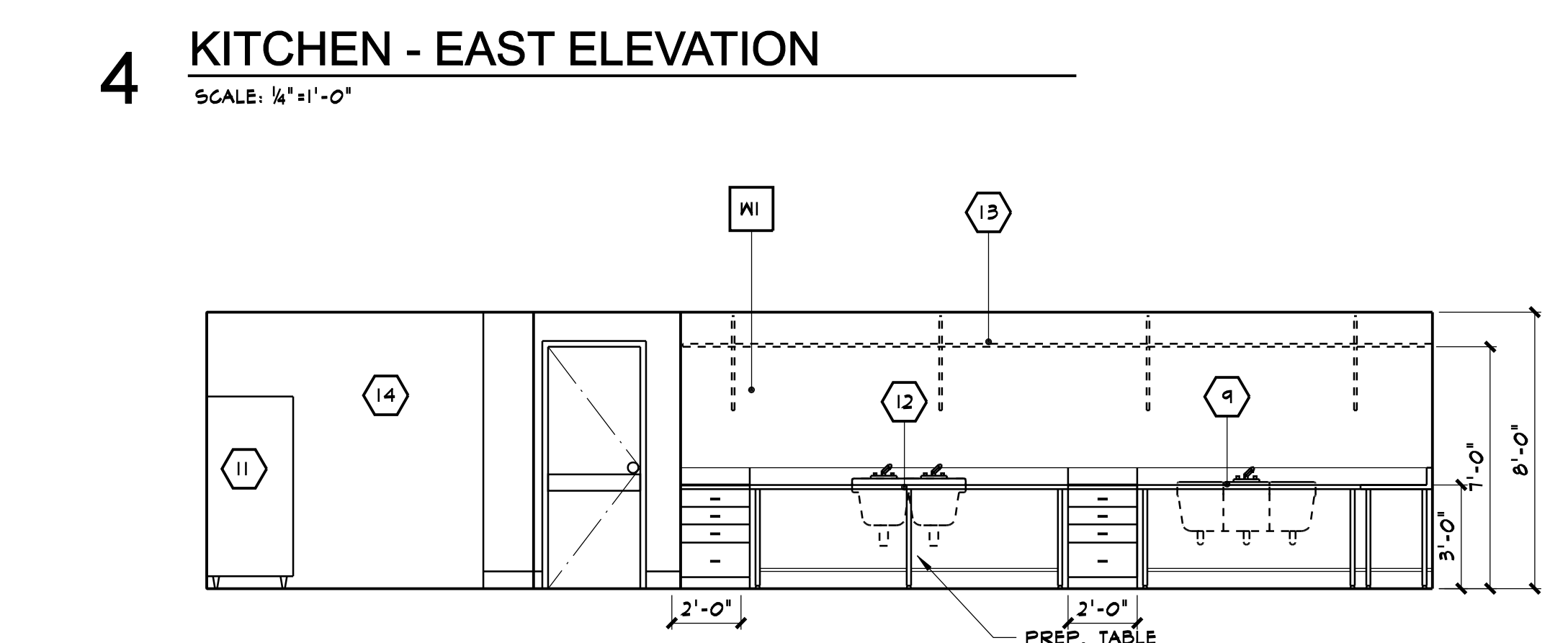
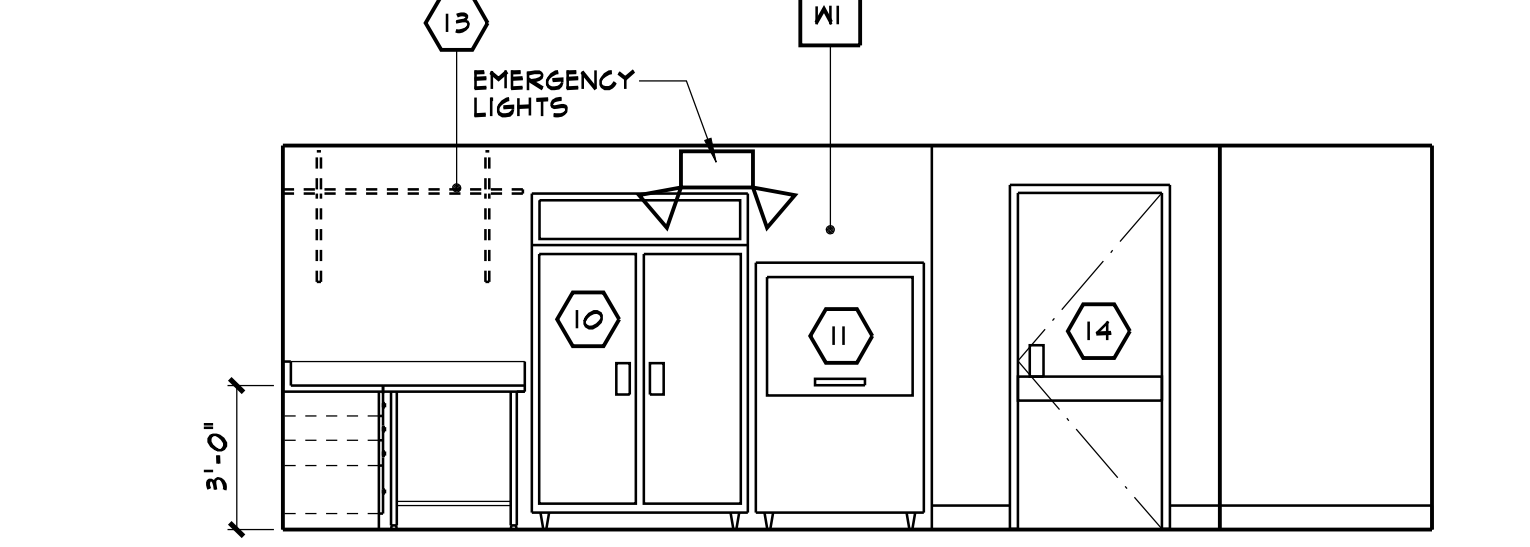
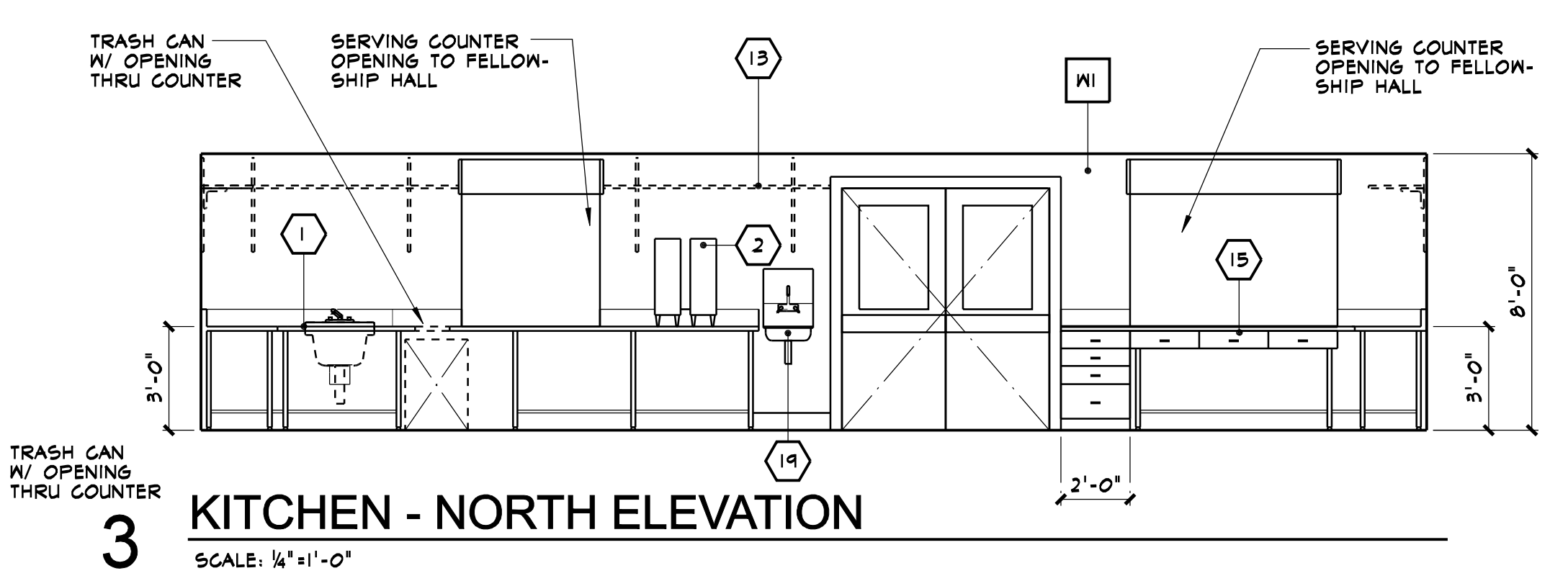
1 DEMO KITCHEN PLAN
SCALE: 1/4"=1'-0"

- DEMOLITION NOTES**
1. VERIFY WITH THE OWNER THE DISPOSITION OF ALL KITCHEN EQUIPMENT TO BE REMOVED
 2. SEE MECHANICAL AND ELECTRICAL DRAWINGS FOR ADDITIONAL DEMOLITION

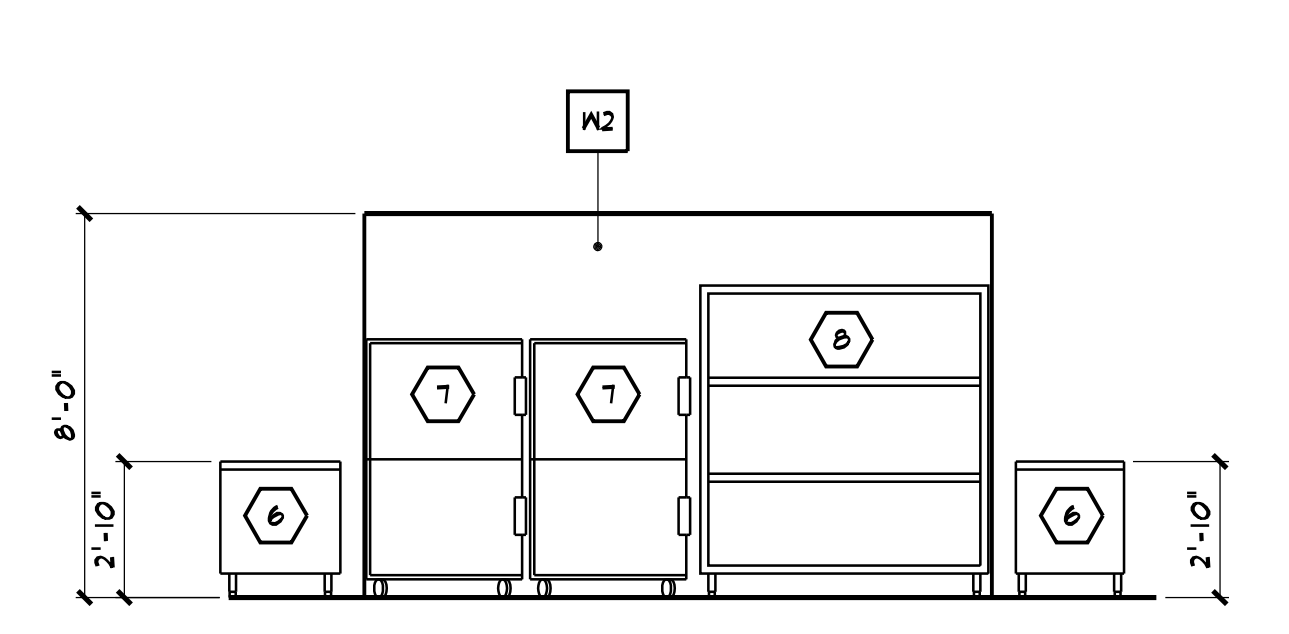
- DEMOLITION KEY NOTES**
- (A) REMOVE FREEZER/REFRIGERATOR
 - (B) REMOVE THRU THE WALL AC UNIT. PATCH OPENING EXTERIOR TO MATCH (E) FINISHES
 - (C) REMOVE (E) PLUMBING FIXTURE
 - (D) INFILL (E) WINDOW OPENING
 - (E) REMOVE (E) UPPER CABINET
 - (F) REMOVE (E) OVEN, RANGE AND DUCTING
 - (G) REMOVE PORTION OF (E) WALL FOR (N) OPENING
 - (H) REMOVE WORK TABLE, BASE CABINET AND OR COUNTERTOP
 - (I) REMOVE (E) WATER HEATER
 - (J) REMOVE (E) WARE WASHER & BOOSTER HEATER, SALVAGE FOR REUSE
 - (K) REMOVE (E) EXHAUST FAN
 - (L) REMOVE UPPER SHELVING
 - (M) REMOVE SOFFIT
 - (N) REMOVE (E) WALLS
 - (O) REMOVE (E) WALLS
 - (P) REMOVE (E) FLOORING/BASE
 - (Q) REMOVE PARTIAL CEILING

- LEGEND**
- EXISTING 2 x WALLS TO REMAIN
 - NEW 2 x WALLS
 - NEW CMU WALLS

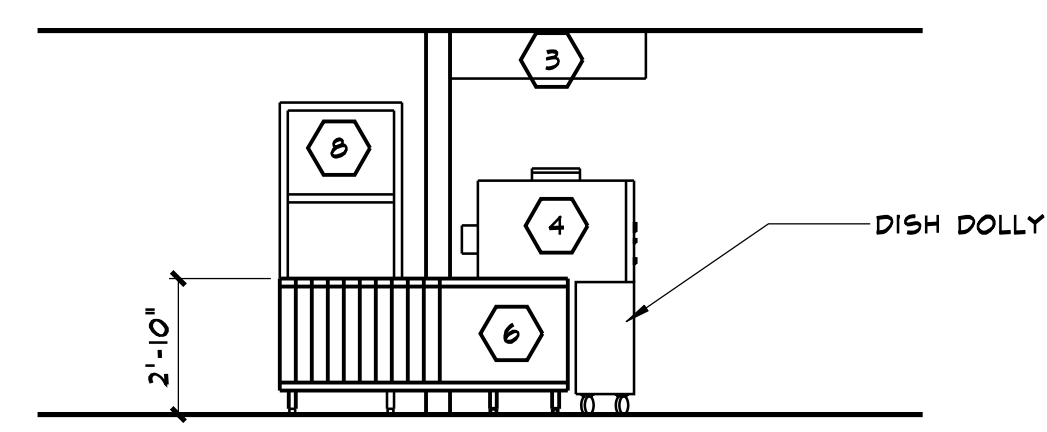
- WALL SCHEDULE**
- W1 WOODFRAME WALL
 - W2 WOODFRAME WALL W/ STAINLESS STEEL COVERING



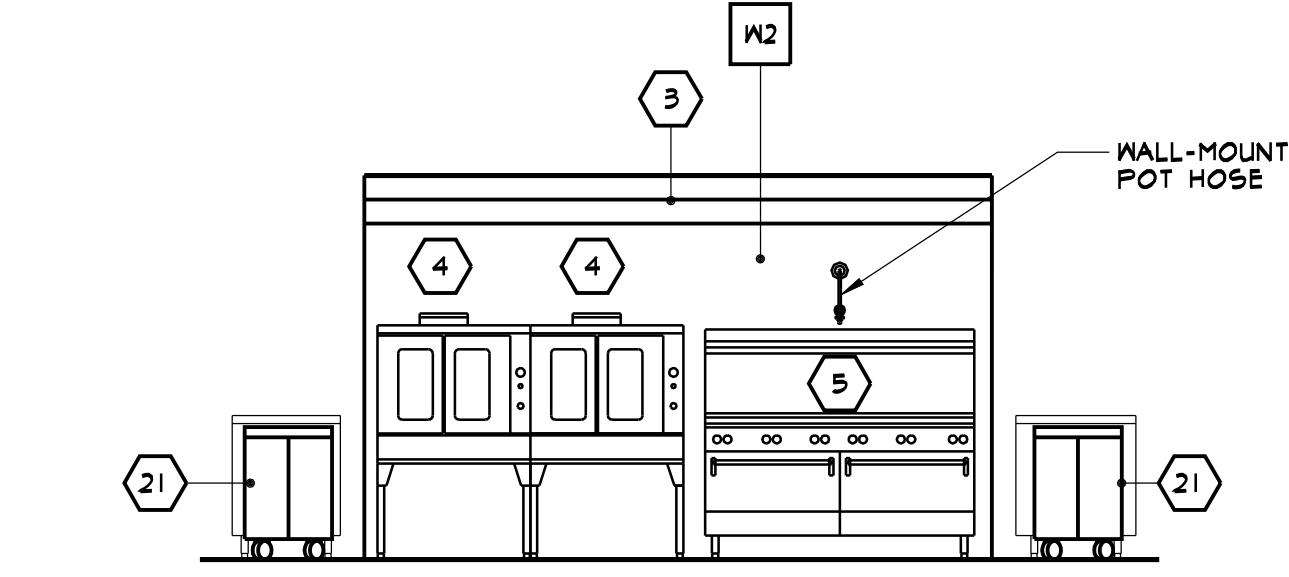
6 KITCHEN - WEST ELEVATION
SCALE: 1/4"=1'-0"



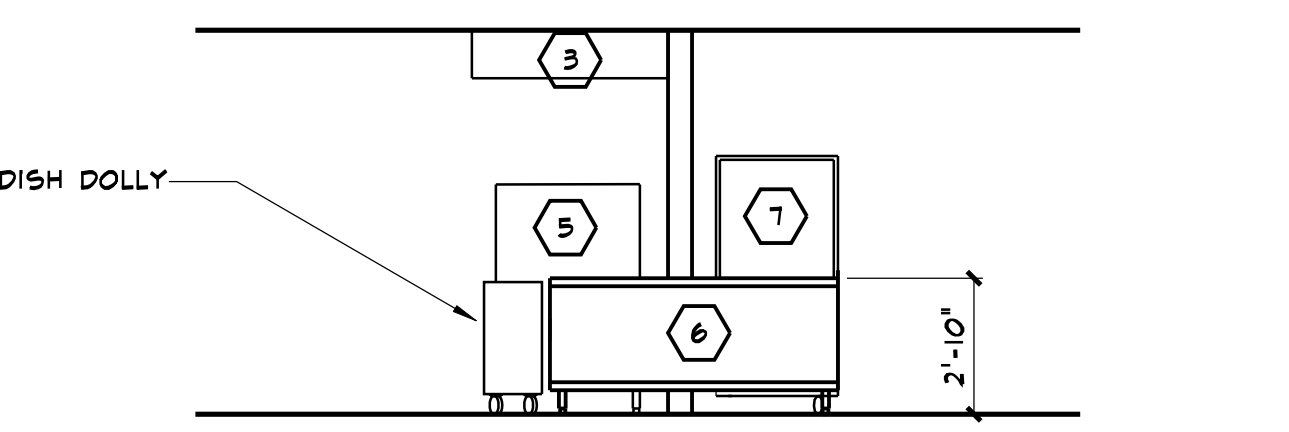
7 ISLAND - NORTH ELEVATION
SCALE: 1/4"=1'-0"



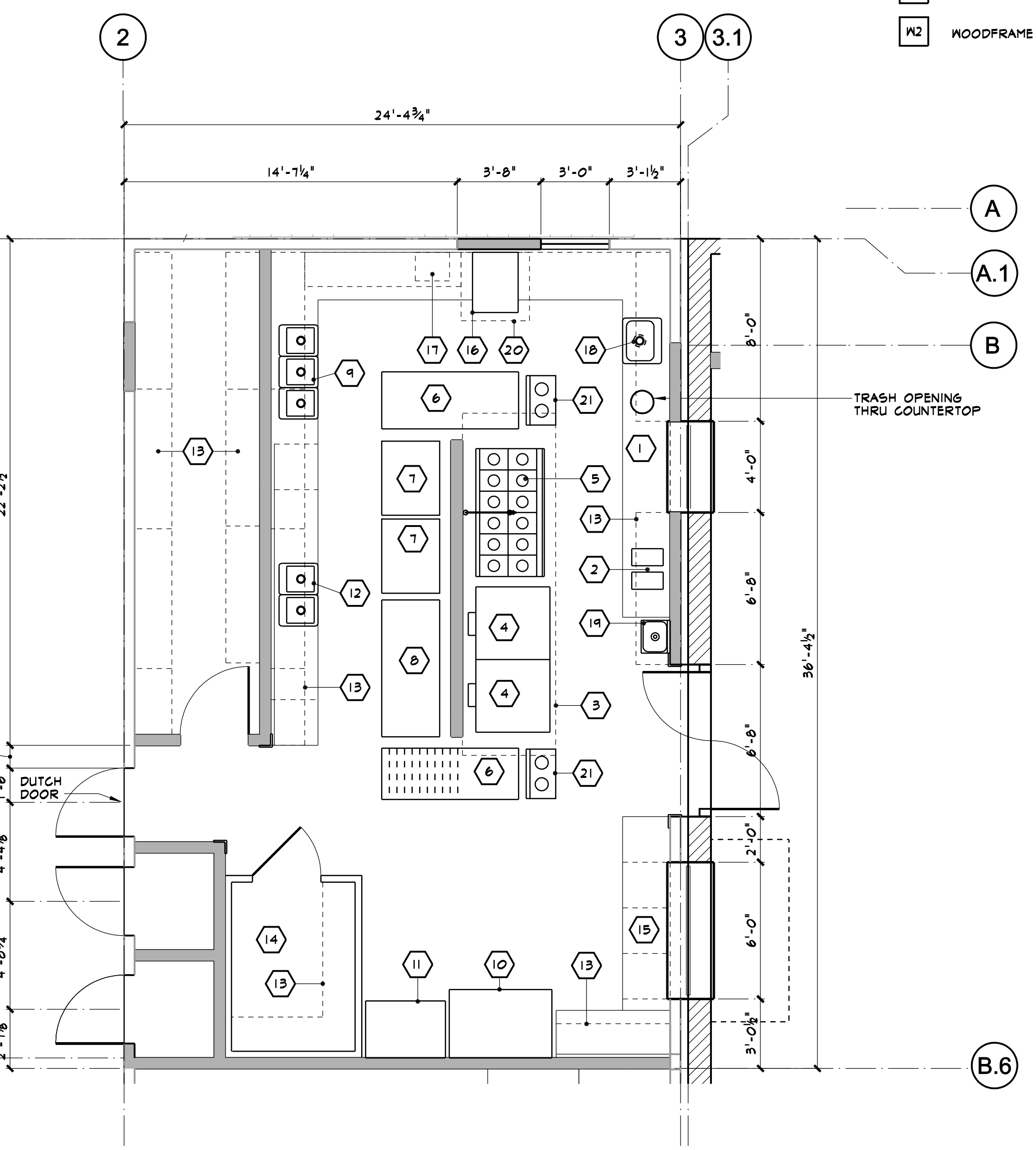
8 ISLAND - EAST ELEVATION
SCALE: 1/4"=1'-0"



9 ISLAND - SOUTH ELEVATION
SCALE: 1/4"=1'-0"



10 ISLAND - WEST ELEVATION
SCALE: 1/4"=1'-0"



2 KITCHEN PLAN
SCALE: 1/4"=1'-0"

KITCHEN ACCESSORY SCHEDULE										
ITEM	DESCRIPTION	MANUFACTURER	MODEL NO.	WATER	GAS	VOLT	HP	AMP	PHASE	REMARKS
1	SERVING COUNTER	CUSTOM		-	-	-	-	-	-	
2	COFFEE MAKERS	CURTIS	GEMINI 300			220			1	
3	EXHAUST HOOD	CUSTOM								W/ ANSUL SYSTEM
4	CONVECTION OVENS	MONTAGUE	#115A	-	3/4"	208		4.1	1	
5	RANGE	WOLF	#CHSSR-12-229		3/4"					
6	WORK TABLES	CUSTOM								
7	HOT & COLD CABINETS	CAMBRO				110				
8	PORT. POT RACK	CUSTOM								
9	POT & PAN SINK	CUSTOM		1/2"	-	-	-	-	-	
10	FREEZER	DELFIELD	SLF56-S	-	-	115	1/2	12	1	
11	ICE MAKER	HOSHIZAKI	KML-450MAH	1/2"	-	115	-	-	1	432 LB PRODUCTION
12	PREP. SINKS & TABLE	CUSTOM		1/2"						
13	SHELVING	METRO								
14	WALK-IN REFRIGERATOR	MASTER-BILT	760608CL				3			6' X 8' X 82" H
15	COUNTERTOP W/ DRAWERS	CUSTOM								
16	(E) DISHWASHER	STERO	SC 20-1A	3/4"		120	3/4	12	1	TO BE REUSED
17	(E) BOOSTER HEATER	HATCO	9KW			240			1	TO BE REUSED
18	DISPOSER & PRE-RINSE	SALVAJOR	300	1/2"				3/4		
19	HAND WASH SINK	ADVANCE	7-PS-85	1/2"						21 1/2" X 15 1/4"
20	VAPOR HOOD	CUSTOM								
21	DISH DOLLY	CRESCOR								

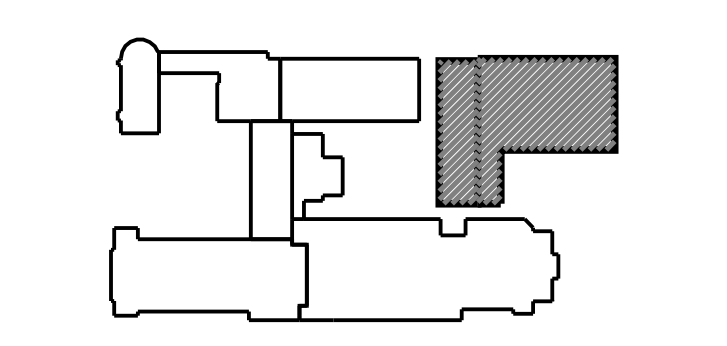


ISSUED
PROGRESS SET 3/28/06
PERMIT SUBMITTAL 4/14/06

AGENCY APPROVALS

PROJECT NO. 25514
RENOVATIONS AND ADDITIONS TO:
CARMICHAEL PRESBYTERIAN CHURCH
5645 MARGONI AVE. CARMICHAEL, CA

PHASE II
KEY PLAN



SHEET TITLE

KITCHEN PLANS & SCHEDULE

SHEET NO.

A2.5